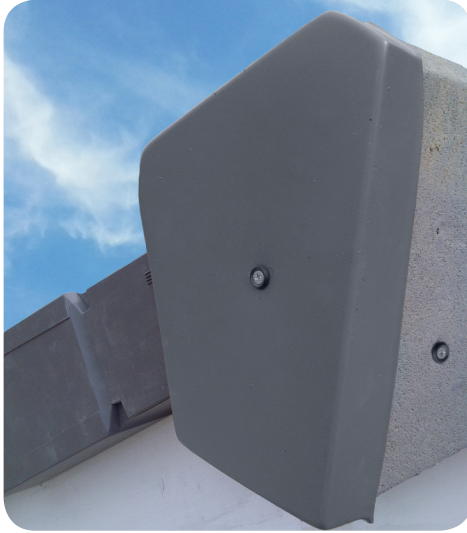


Rapid Monoridge End Cap



Rapid Monoridge End Caps provide a cost-effective way of creating a block-end appearance with standard monoridge tiles. Monoridge End Caps can be used to finish a monopitch ridge at a gable end wall where dry verges are used instead of a traditional mortar-bedded verge.

Installation

Rapid Monoridge End Cap is very simple to install and provides a maintenance-free, mechanically fixed, weatherproof block-end finish to a ridgeline for a monopitch roof. Available in Slate Grey or Rust.

Ridge Tile Compatibility

Works with Redland Concrete Half Round or Universal Angle Monoridge tiles or equivalent ridge profiles.

Product Codes:

- 976330** Half Round LH Slate Grey
- 976355** Half Round LH Rust
- 976430** Half Round RH Slate Grey
- 976455** Half Round RH Rust
- 977830** Universal Angle LH Slate Grey
- 977855** Universal Angle LH Rust
- 977930** Universal Angle RH Slate Grey
- 977955** Universal Angle RH Rust

Pack Contents:

- 1 x Mono Ridge End Cap
- 1 x 50 x 4mm Pozi-Drive Stainless Steel Woodscrew
- 1 x 2 Piece Screw Cap Cover
- 1 x Batten End Clip



Universal Angle RH



Half Round RH



Half Round LH

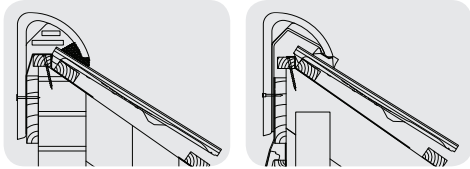


Universal Angle LH



Rapid Monoridge End Caps are most commonly used in conjunction with monoridge tiles where they meet dry verges at a gable end. It is essential, whatever the configuration, that both the ridge batten on the apex of the monoridge and the tiling battens on the slope of the monoridge are set out correctly with the correct batten dimensions being used and the correct overhangs over the gable wall.

Rapid Monoridge End Cap



These drawings show some typical applications for Rapid Monoridge End Caps.

2

A short length of ridge batten spanning a minimum of two rafters should be screw-fixed to the apex of the rafters using a minimum of two 75mm long x 4mm diameter stainless steel wood screws, or to the top of the masonry using masonry screws, whichever is the highest point of the structure. The ridge batten should be either 38 or 50mm wide and 25mm deep. Ensure the ridge batten does not block the high level ventilation path if used in conjunction with DryVent Monoridge System.

Fix the Batten End Clip (included) to the batten end as per Redland's RapidVerge fixing instructions; the batten end clip provides the fixing point for the Monoridge End Cap screw fixing.

For Redland RapidVerge the tiling battens should overhang the gable wall by 60mm.



3

Use the 50mm x 4mm wood screw with plastic washer to mechanically fix the end cap into the batten end clip on ridge batten. Here the Universal Angle Monoridge End Cap R/H (9779) is shown fixed with Redland DryVent Monoridge and RapidVerge.

Snap the screw cover over the screw head to complete the installation.

INTERACTIVE SECTION



Full technical specification and installation details

www.monier.co.uk/monoendcaps

Customer Service Hotline

Telephone 08705 601000

Facsimile 08705 642742

Email sales.redland@monier.com

Technical Solutions Hotline

Telephone 08708 702595

Facsimile 08708 702596

Email technical.redland@monier.com

Part of **BRAAS MONIER BUILDING GROUP**

September 2014