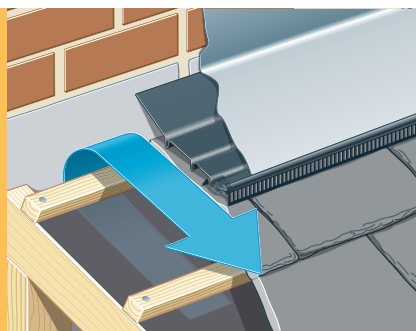


TOP EDGE ABUTMENT VENTILATION SYSTEM

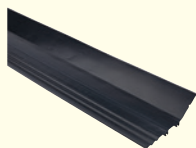
A system that provides a continuous unobstructed ventilation path from the roof void to the outside. It can be installed far quicker than traditional methods.



TOP EDGE ABUTMENT VENTILATION SYSTEM: PRODUCT CODES AND DESCRIPTIONS

Description	Product Code	Pack Contents	Coverage
Flat Tiles Top Edge Abutment Pack	9548	3 Trays, 10 Ratchet Clips with Spacer Blocks and 7 Profile Filler Units	3m
Landmark Double Pantile / Grovebury Top Edge Abutment Pack	9541	3 Trays, 10 Ratchet Clips with Spacer Blocks and 7 Profile Filler Units	3m
Regent Top Edge Abutment Pack	9542	3 Trays, 10 Ratchet Clips with Spacer Blocks and 7 Profile Filler Units	3m
Landmark Double Roman / 50 Double Roman Top Edge Abutment Pack	9543	3 Trays, 10 Ratchet Clips with Spacer Blocks and 7 Profile Filler Units	3m
Renown Top Edge Abutment Pack	9544	3 Trays, 10 Ratchet Clips with Spacer Blocks and 7 Profile Filler Units	3m

Compatible with all Redland profiles with the exception of Redland 49, Fenland Pantile, Postel Clay Tile, Old Hollow Clay Pantile and Cathedral Clay Pantile. For use with natural/fibre cement slates, please contact Technical Solutions on 03708 702595.



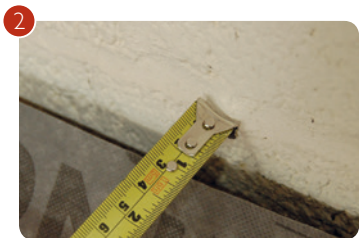
Lead Support Tray



Profile Filler Unit
(Regent shown)



Ratchet Clip



1

Fix underlay so that it finishes under top batten (see table on page 87 for top batten position). Ensure the underlay does not touch the wall at mid-point between rafters.

2

To provide the required ventilation, ensure that there is a minimum 10mm gap between the top tile and the face of the wall. For roofs with rigid sarking, ensure sarking boards are laid short of wall by a minimum of 10mm.

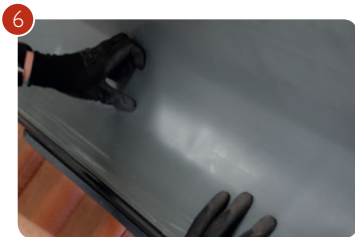


3

Take Ratchet Clip and peel off the protective backing strip. (For profiled tiles fold both wings down at right angles prior to peeling off the protective backing strip).

Important Note: The adhesive material on the underside of the Ratchet Clip will only adhere to the surface if the tile is dry, clean and dust free.

TOP EDGE ABUTMENT VENTILATION SYSTEM



4

a) With profiled tiles, carefully centre the Ratchet Clip over the nail hole position on the top tile, ensuring that the downstand of the clip is tight against the head of the tile. Press the wings firmly down onto the surface of the tile. When using a nail holed product, make certain that the centre line of the clip is directly over the nail hole.

b) When fixing plain tiles, locate the clip in the centre of the head of the tile and press firmly into position (**Note:** plain tile top clips must be used when fitting concrete plain tiles.) For all other flat tiles with nail holes, position the centre of the clip over the right-hand nail hole in the tile. For all flat tiles with no nail hole,

position the clip in the centre of the head of the tile.

Note: Fix one clip per tile in all cases except plain tiles where a clip is fixed to every other tile.

5

When fixing a nail holed product, secure the tile by nailing through the centre of the clip into the tiling batten regardless of the clipping specification. Locate Profile Filler Unit on to the face of the tile and snap Ratchet Clip hook into one of the ventilation openings. Attach all Profiled Filler Units to Ratchet Clips.

6

Take a tray and locate the underside of the leading edge flush with the edge of the Profiled Filler Units. Press down firmly on the tray so that the channels on the underside of the tray engage into the upstands of the Ratchet Clip. A 5mm gap should be left between successive lengths of the tray to allow for any thermal expansion.

Depending on the pitch of the roof, the hinged rear section of the tray should be folded back to touch the wall. Continue laying the trays the full length of the abutment, ensuring that any cut

lengths of tray are supported by no less than two Ratchet Clips. Any cut lengths of tray should be positioned in the centre of the abutment.

7

Fix lead or Wakaflex Rapid Flashing in lengths not exceeding 1.5 metres, laying it into the trays and ensuring that it is firmly engaged into the channel on the leading edge of the tray. Fix and dress the lead or Wakaflex Rapid Flashing as normal in accordance with Lead Sheet Association (LSA) or Redland fixing instructions.

PITCH RANGE AND TOP BATTEN DISTANCES

Tile & Slate	Range (degrees)	Top batten distance down rafter from wall
Landmark Double Pantile / Grovebury	15° - 50°	40mm
	50° - 60°	30mm
Mini Stonewold / Slate 10 Range / Renown / Landmark Double Roman / 50 Double Roman	17.5° - 60°	40mm
Regent	12.5° - 50°	40mm
	over 50° - 60°	20mm
Cambrian Slate	15° - 60°	20mm
Stonewold II	17.5° - 44°	70mm
Plain Tile / Heathland	35° - 60°	65mm
	60° - 65°	90mm
	65° - 67.5°	95mm
DuoPlain	25° - 60°	65mm
	60° - 65°	90mm
	65° - 67.5°	95mm
Rosemary clay plain tile	35° - 60°	40mm
Fontenelle	20° - 60°	40mm